



**HUB84**

# Welcome to HUB84

Nestled in the vibrant heart of Hazmieh, next to the City Center Mall and Mount Lebanon Hospital, our new commercial building sets a benchmark for modern retail spaces. Designed with elegance and functionality in mind, our three-floor establishment offers a diverse array of retail areas perfectly suited for a variety of businesses.

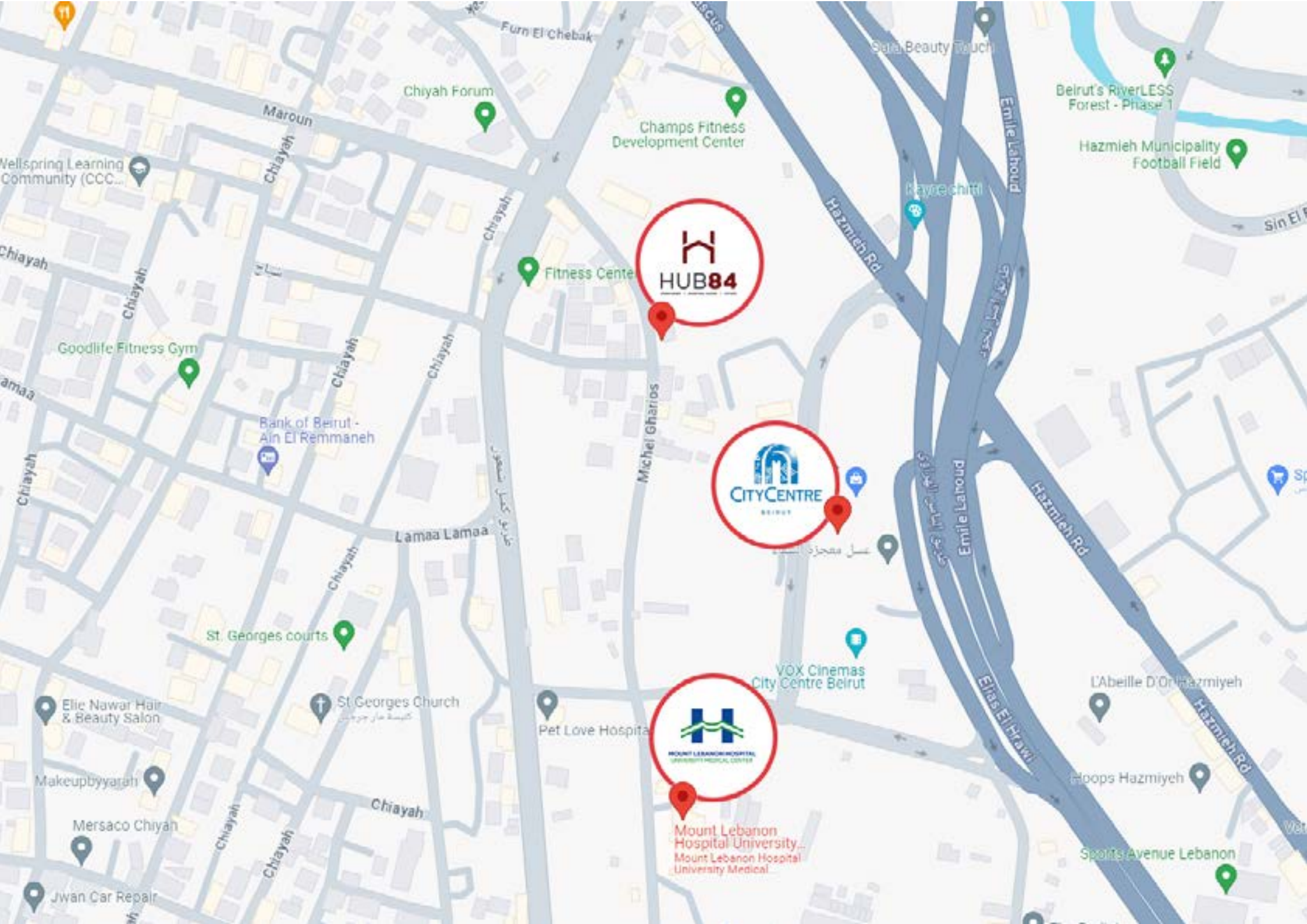
Whether you are a boutique retailer, a bustling supermarket, a trendy gym, or a serene spa, our spaces are tailored to meet your unique needs.

## Key Features:

- **Prime Location:** Situated in one of Hazmieh's most dynamic and accessible areas, ensuring high foot traffic and visibility for your business.
- **Modern Design:** State-of-the-art architecture and infrastructure, providing a sleek and contemporary environment.
- **Versatile Spaces:** Flexible floor plans that can accommodate a wide range of businesses from retail shops and outlets to wholesalers and specialty stores.
- **Comprehensive Amenities:** Equipped with top-notch facilities including ample parking, 7/24 security, and maintenance services to ensure a seamless operational experience.
- **Sustainable Practices:** Committed to sustainability with eco-friendly construction and energy-efficient systems.
- **Green Outdoor and Roof Space for Rent:** An exclusive rooftop area available for rent, perfect for restaurants, cafes, or special events, offering a unique and attractive setting.

## Our Vision:

At **HUB84**, we believe in fostering a thriving business community. Our mission is to create a dynamic commercial hub that not only meets but exceeds the expectations of our tenants and their customers. We are dedicated to providing a space where businesses can flourish and where customers can enjoy a premium shopping and service experience.



Mount Lebanon Hospital University...  
Mount Lebanon Hospital  
University Medical



#### STRATEGIC LOCATION:

- HAZMIEH AROUND THE CITY CENTER AREA
- <https://maps.app.goo.gl/ceFyjXEwac6BBrKN8>

- A PROJECT THAT CONSISTS OF MULTI USE SPACES RANGING FROM 300 M2 TO 1500 M2 IN THE CENTER OF THE CITY
- ITS INDUSTRIAL DESIGN HIGHLIGHTS THE VERSATILE FUNCTION IT CATERS





- 3 FLOORS
- UP TO 14 UNITS PER FLOOR
- PARKING SPACES



**BLOCK A**  
**7 SHOPS**

**BLOCK B**  
**6 SHOPS**

**GROUND FLOOR**



**FIRST FLOOR**



**BLOCK A**  
**7 SHOPS**

**BLOCK B**  
**6 SHOPS**



**OPTION 1**

**BLOCK A**

**BLOCK B**

**GROUND FLOOR**

**800M2**

**525M2**

**FIRST FLOOR**

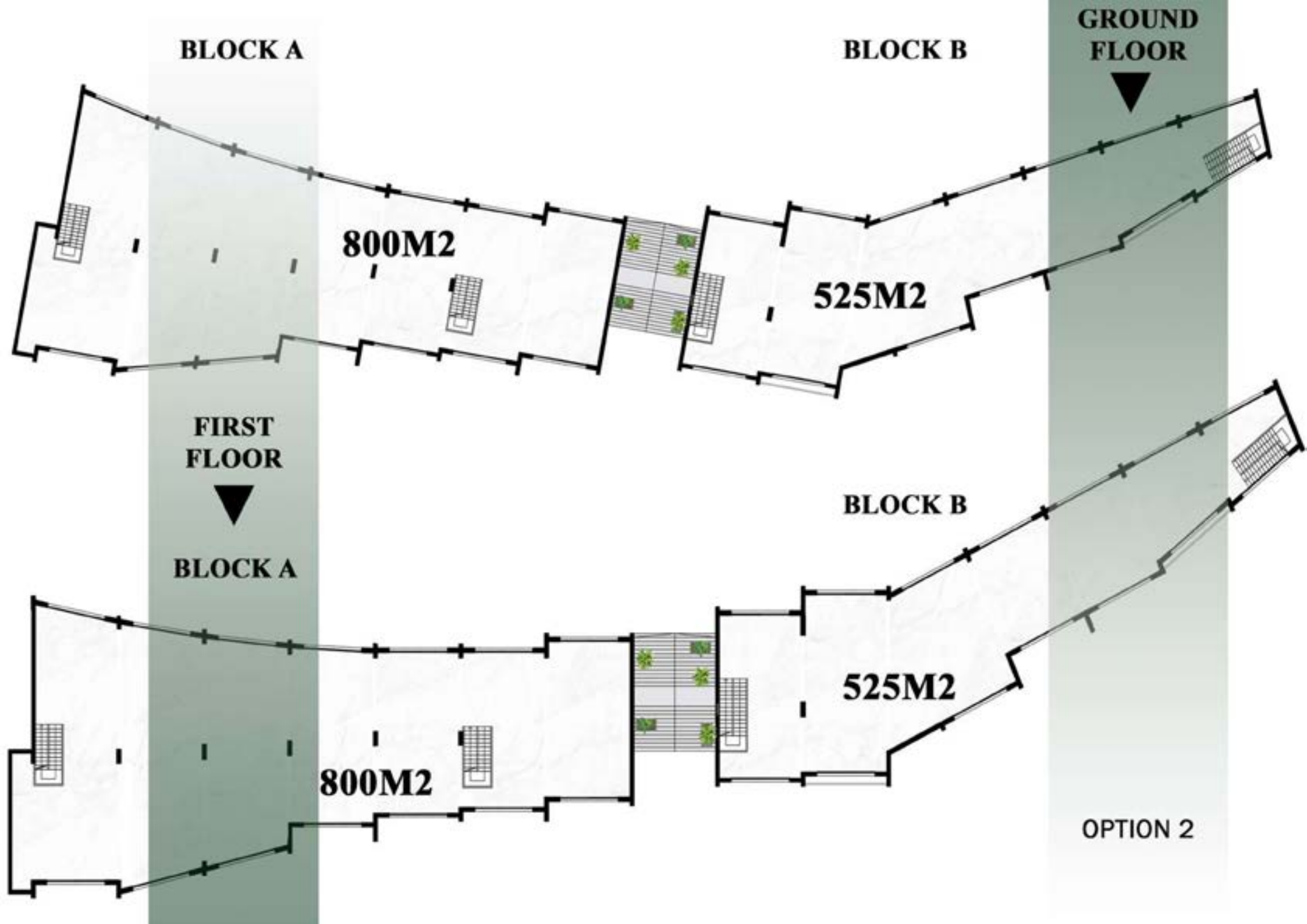
**BLOCK A**

**BLOCK B**

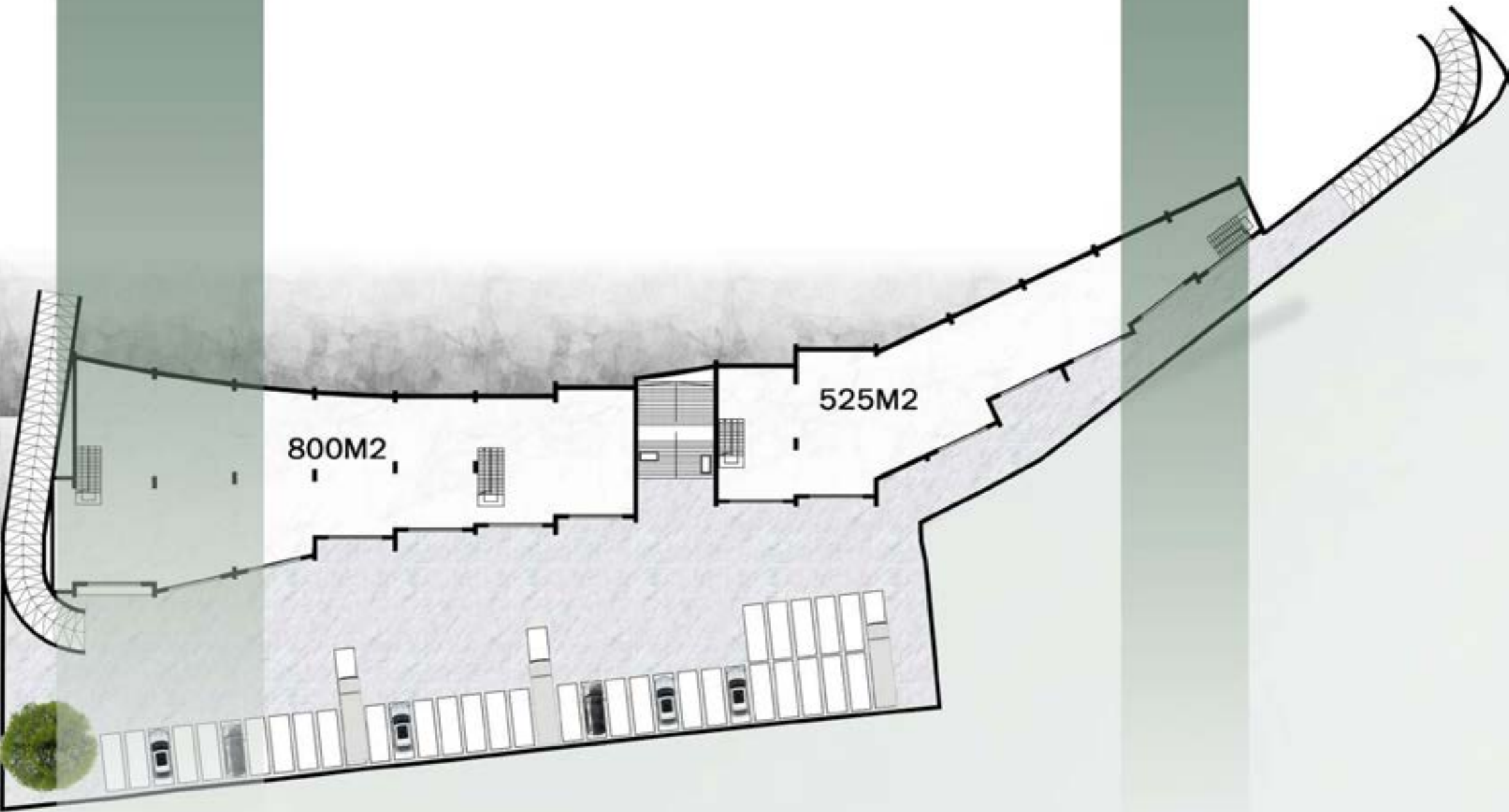
**800M2**

**525M2**

**OPTION 2**



BASEMENT 1







HUB 84













HUB 84















HUB 84





